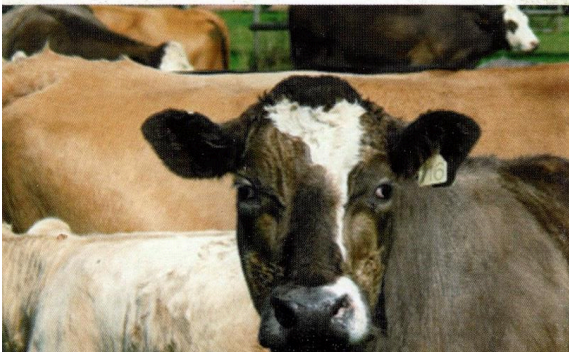


## Why do we have grazing animals?

Livestock grazing has played an enormous part in shaping the landscape we enjoy today. These are some of the many benefits:

- Grazing can allow a wider variety of plants, fungi, animals and particularly insects to thrive
- Insects that depend on livestock grazing provide a food source vital to the survival of birds such as swallows and lapwings
- Views are brought to life by farm animals moving around a landscape
- It reminds us that the living countryside is a source of our food and employment
- Using farm animals to maintain wildlife habitats is more cost-effective and sustainable than the use of machines, over the long term
- Done properly, grazing can help reveal and to protect archaeological features that show how the land has been managed in times past



## Please follow the Countryside Code:

- Be safe - plan ahead and follow any signs
- Leave gates and property as you find them
- Protect plants and animals - take your litter home
- Keep dogs under close control

The National Trust was established in 1895 to promote the preservation of 'natural aspects, features and animal and plant life'. We own and care for over 1,000 properties and are one of the largest non-government landowners in the UK.

For more information, go to [www.nationaltrust.org.uk](http://www.nationaltrust.org.uk) or phone 01284 747500.

All photographs are from The National Trust Picture Library. Charity No. 205846.



THE NATIONAL TRUST

# Walking with Livestock.



**As you walk around this National Trust property, you may come across grazing animals.**

**Here are some tips to help you enjoy your walk.**

Most farm animals are kept indoors during the winter. For the first few weeks after being let outside they can be full of the joys of spring and very inquisitive. **Try not to startle them and don't run**, as they may think that this is a great idea and decide to join you! **Small children should be kept close to you**, as they may startle an animal accidentally.

**Whistle or talk to them as you approach** so that they know you are coming. If you then walk quietly past and away the animals are more likely to ignore you. They may be excited or frightened by large groups of people among them, so try to **keep group members calm and quiet** as you pass.



If you find cattle blocking your way, **clap your hands loudly as you approach** and they should move out of your way. If not, leave the path and go round them. **Avoid lingering between mothers and their calves.**

**Never allow your dog to chase livestock!** It causes distress and may result in injury, especially if the animal is pregnant. If animals appear to be closely interested in your dog, let it run away and meet you further along. If you pick up your dog the animals may still try and get close to it. If your dog is very old or slow, for its own safety you should perhaps find another route to avoid this situation developing.



Think ahead. **Don't allow yourself to become cornered by a group of cattle.** They may be curious and cows pushing from the back could cause those in front to panic if they are forced too close to you.

Farm animals are not pets. **Don't feed or stroke them**, as this can lead to problems. They may begin to think that all humans are bringing them food and approach everyone they see. If you want to take a photograph, have your camera ready before you get to them, as they may think your rucksack has food in it, if you open it in front of them.



However cute they may look, mothers will not want you to approach their young. **Keep away from young farm animals**, even sheep can be threatening when they want to be. At the same time, keep your own child's pushchair close to you at all times or you could find that curious animals may tip it over or scare your child.

More information can be downloaded from the Countryside Access website, [www.countrysideaccess.gov.uk](http://www.countrysideaccess.gov.uk). Follow the links to 'Things to do', then 'Dog Walking'.

